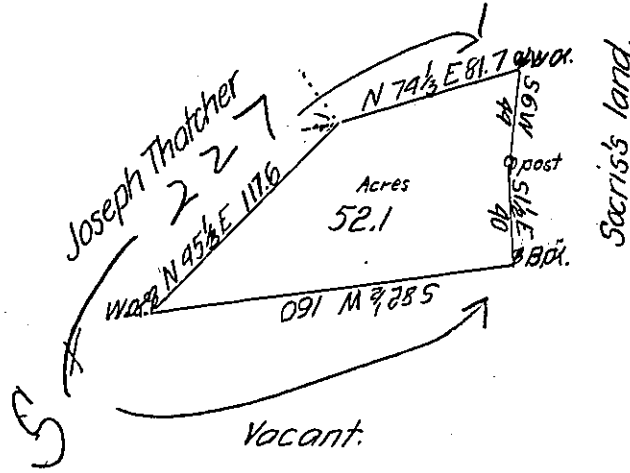


Courses & Dist^{ces}
 N 74½ E 81.7
 S 6W 44
 S 1½ E 40
 S 82½ W 160
 N 45½ E 117½



The Draught of a tract of land situate in Greenwood township Cumberland County containing fifty two acres & one tenth of an acre & the Usual allowance of Six P^{er} Cent. for roads &c^o surveyed for Zachariah Spangle July the 29th 1785 in pursuance of a Warrant from the Honorable the Vice President of the Supreme Executive Council Dated at Philad^a March the 7th 1785—

John Lukens Esq.
 Surveyor General.

Ja^s Harris DY

IN TESTIMONY that the above is a copy of the original remaining on file in the Department of Internal Affairs of Pennsylvania, made conformably to an Act of Assembly approved the 16th day of February, 1833, I have hereunto set my Hand and caused the Seal of said Department to be affixed at Harrisburg, this Thirtieth day of November 1906.

Geac P. Brown
 Secretary of Internal Affairs.